

Cambridge Wing

Admissions 2021-2022

Pakistan International
School, Qatar
(PISQ)

'Sample' Admission Test Booklet, Cambridge Stream

Year
00

Student's Name					
Father's Name					
Nationality & Religion					
Previous School					
English	Math	Sc./Comp.	Sc./Eco.	Sc./Acct.	Total

Select ONE Group		
A	B	C
biology physics chemistry	computer sc. physics chemistry	computer sc. economics accounting

Comments & sign of the evaluator:

ENGLISH	Q1 [00]		Q2 [00]	Q3 [00]		Total
	(A)	(B)		(A)	(B)	/00

Total Marks: 00

- Read the questions/instructions carefully before you start writing the answer.
- In case of confusion in understanding the instruction, you can ask the teacher-on-duty for some guidance.
- Avoid overwriting and cutting and complete the writing exercises within the space provided.



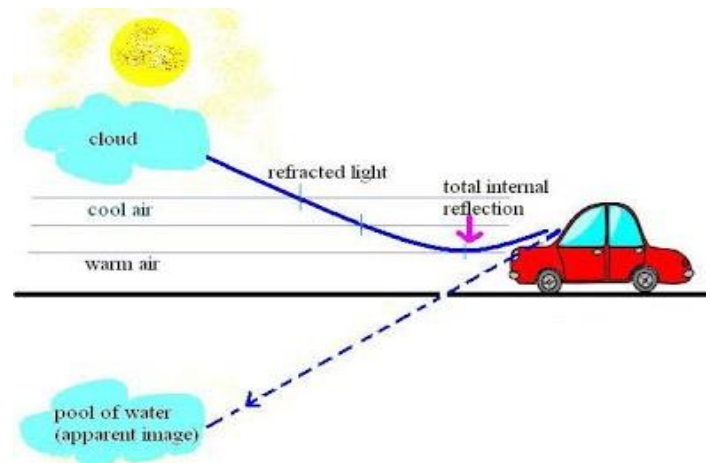
Reading Comprehension: The Lake that wasn't There

A group of drivers driving across the Sahara Desert was **startled** to see a cool, inviting lake that had suddenly appeared in the distance. They **gazed** with delight at the broad sheet of water **sparkling** in the sunlight. Busily, they made plans to go swimming as soon as they reached the lake. But their driver, an experienced desert guide, informed the passengers regretfully that when they reached the area **ahead**, they would find only dust, sand, and rocks.

The travellers insisted that they could see something ahead. Those with cameras were even able to take pictures of the lake the driver said wasn't there! Later, they learnt that what they had seen was reflection of the sky on the hot, dry land. Their cameras, like their eyes, had seen the image the light rays had created. They had seen a **mirage**.

Mirages appear when there are layers of air of different **density**. Next to the desert floor, the air was hot. Above this hot air was another layer of cooler, denser air. Light rays passing down from the layer of denser air into the layer of less dense air were bent upward. The bent rays reflected the sky. This bending of rays is called *refraction*.

On a clear summer day, drivers may see this kind of mirage on a paved highway. Their eyes tell them that a **patch** of road ahead is wet. A blanket of hot air lies next to the road **surface**, which has been warmed by the sun. Light rays bend upward and they pass into this layer. What the drivers see is just the reflection of the sky.



Q1. A) Answer the following questions. [07]

1. Where the group of drivers was travelling and what appeared in front of them? (2)

2. What plan did they make about what they saw? (1)

3. What did the experienced drive tell them they would find ahead? (1)

4. What do we call the bending of rays? (1)

5. In summer days, where can drivers see mirages? (1)

6. What happens to the rays passing down from denser air into less dense air? (1)

B) Circle only one option from a), b), c), and d) that shares similar meaning with the listed words. [04]

- | | | | | |
|-----------------------|-----------------|-----------------|----------------|------------------|
| 1. startled: | a) happy | b) sad | c) surprised | d) afraid |
| 2. gazed: | a) painted | b) saw | c) discussed | d) controlled |
| 3. sparkling : | a) shiny | b) pure | c) interesting | d) disturbing |
| 4. ahead: | a) attractive | b) behind | c) above | d) forward |
| 5. mirage: | a) wedding | b) illusion | c) rain | d) pool |
| 6. density: | a) shape | b) thickness | c) surface | d) heavy |
| 7. patch: | a) a box | b) a small area | c) a plant | d) a hole |
| 8. surface: | a) central area | b) outer area | c) corner area | d) none of a,b,c |

Q2. Do as directed. [05]

1. She was washing dishes. (*Name the underlined part of speech.*)

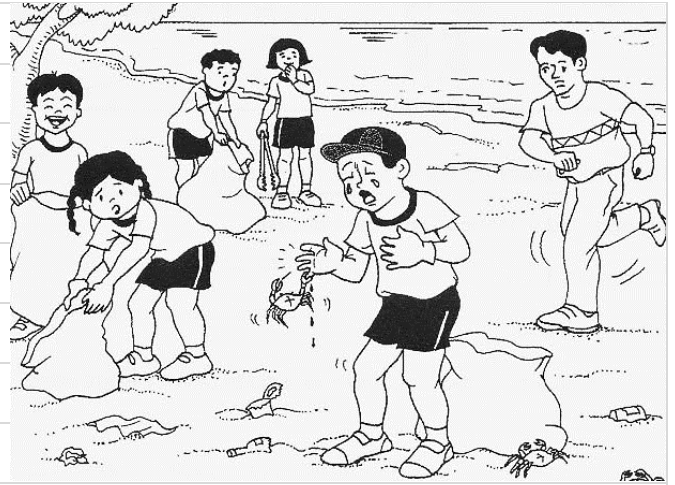
2. The town was really beautiful. (*Name the underlined parts of speech.*)

3. It is _____ university. (*Add a suitable article – a, an*)

4. They were playing outside. (*Change the sentence into a question.*)

5. The child wept. (*Change the statement into a negative sentence.*)

Q3. A) Look at the picture carefully and develop a story in the space provided. [/07]



A series of horizontal lines providing space for writing a story based on the illustration above.

MATHS	Q1	Q2	Q3	Q4	Q5	Q6	Q7	Total

Total Marks: 00

- Read the instructions carefully before you start solving the question.
- In case of confusion in understanding the instruction, you can ask the teacher-on-duty for some guidance.
- Use of basic (school) scientific calculator is allowed.

1. Write the missing numbers.

(a) $67 + \boxed{} = 100$

[3]

(b) $650 + \boxed{} = 1000$

[3]

2. Double 76

[2]

.....

3. Complete the calculations.

(a) $376 \times 10 = \boxed{}$

[3]

(b) $\boxed{} \div 10 = 48$

[3]

4. This is part of a calendar for May.

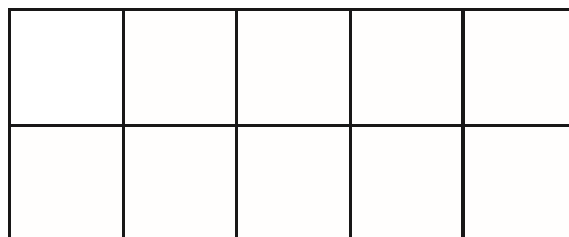
S	M	T	W	T	F	S
		1	2	3	4	5
6						

Graham's birthday is on 26th May.
Which day of the week is his birthday?

[4]

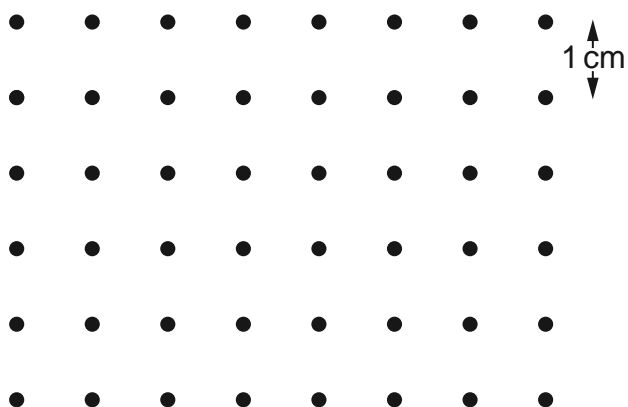
.....

Shade $\frac{1}{5}$ of this diagram.



[2]

5. (a) Draw a rectangle 5 cm long and 2 cm wide by joining dots on the grid.



[2]

(b) Find the perimeter of the rectangle.

cm [1]

.....

7. Abdul records the shoe colour of every person in his class. They are:

Blue	Black	Brown	Brown	Black	Brown	White	Black	Blue
White	Black	Black	Blue	Brown	Black	Blue	Blue	Black

Complete the table to show the data.

Shoe colour	Tally	Frequency
Black	II	7
Blue		
Brown		
White	II	2

[2]

SCIENCE	Q1 [00]	Q2 [00]	Q3 [00]	Total
				/00

Total Marks: 00

- Read the instructions carefully before you start solving the question.
- In case of confusion in understanding the instruction, you can ask the teacher-on-duty for some guidance.
- Avoid overwriting and cutting.

Q1. a. Carry out the following actions and determine whether they are pulls or pushes (3)

Kicking	
Stepping	
Dragging	
Tugging	
Squeezing	
Lifting	

b. Taking into consideration the shape of the automobile below, validate (6)

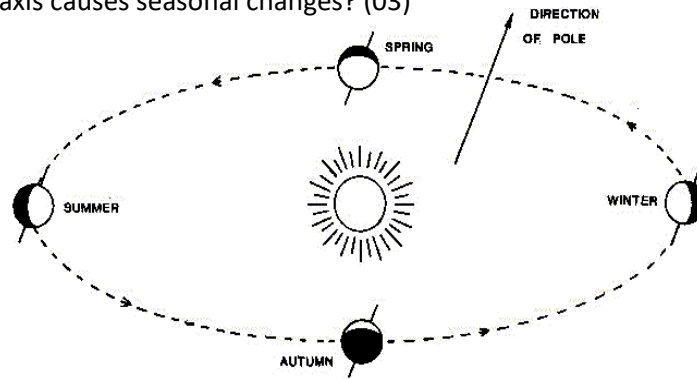


Hindrance due to air causes:

What characteristic shape of the automobile helps to overcome it:

(Total Marks: 09)

Q2. a. Our planet earth revolves around the sun in a characteristic orbit. This rotation is highly regulated. What orientation of the earth's axis causes seasonal changes? (03)



b. Of all the planets that make up the solar system life exists only on earth. What atmospheric feature and its relative percentage supports life on earth? (03)

c. How life forms on earth are threatened by human activities? (03)

(Total Marks: 09)

Q3. Identify which of the following objects exhibit shine? Can you see your own reflection in the object? What sort of surface the object has? (07)

Object	Is it shiny?	Can you see your own reflection in the object	Is the surface rough or smooth
Mirror			
Glass jar			
Cloth towel			
Rubber mouse pad			
Metal spoon			
Aluminum foil			
Cardboard			

(Total Marks: 07)